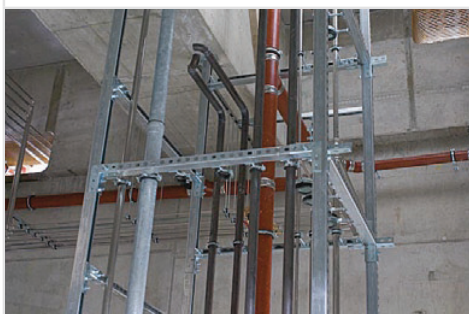
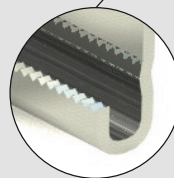


Installation System FUS



A complete installation system suitable for:

- industrial piping
- heating and sanitary supply pipes
- ventilation, air duct
- electrical installation, like cable trays, data lines etc.
- solar panels installations



- The serration in the channel gives shear load benefits e.g. in vertical installation.

Channels

FUS 21, FUS 41, FUS 62

Page 74



Cantilever

FCA

Page 78



Connectors

FCN Clix P

Page 82



Channel connectors

SF

Page 86



Channel connectors

VB

Page 90



FUS 21 D, FUS 41 D, FUS 62 D

Page 74



EMS 41

Page 81



FEC

Page 81



FCAM

Page 80



FCN Clix M

Page 82



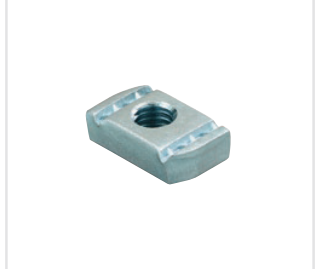
FHS Clix S

Page 83



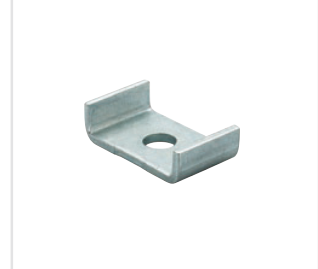
FCN

Page 84



HK 41

Page 85



UWS

Page 87



FAF

Page 94



FUF

Page 95



FFF

Page 93



FSB 45°

Page 92



UHRS

Page 89



TKR

Page 91



FUF OC

Page 81

