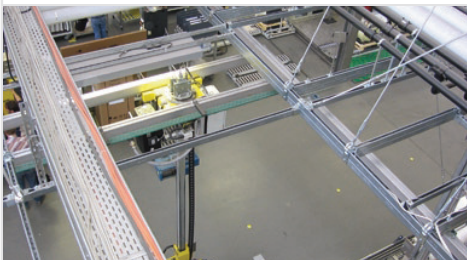


# Installation Grid



By means of fischer Installation Grid, media of all kind can be supplied to any point in the production area.

- Pipes for ventilation, heating, air conditioning and water.
- Supply pipes for compressed air, technical gases and the removal of exhaust fumes or for the supply of liquids to the production area.
- Ducts and supports for power cables, data lines etc.
- Electrical installation like cable trays.
- Lamps, lightening strips.
- Overhead heating systems.
- Noise-damping elements.
- Industrial construction.

## Channels

FUS

Page 101



## Connectors

FCN Clix P

Page 103



## Channel Connectors

FVS

Page 100



UHRS, FHS Clix-S

Page 102



FSB 45°

Page 103



VM

Page 102



SPS / BLR

Page 102



FUF OC 62

Page 101



TKR

Page 102



Installation Grid